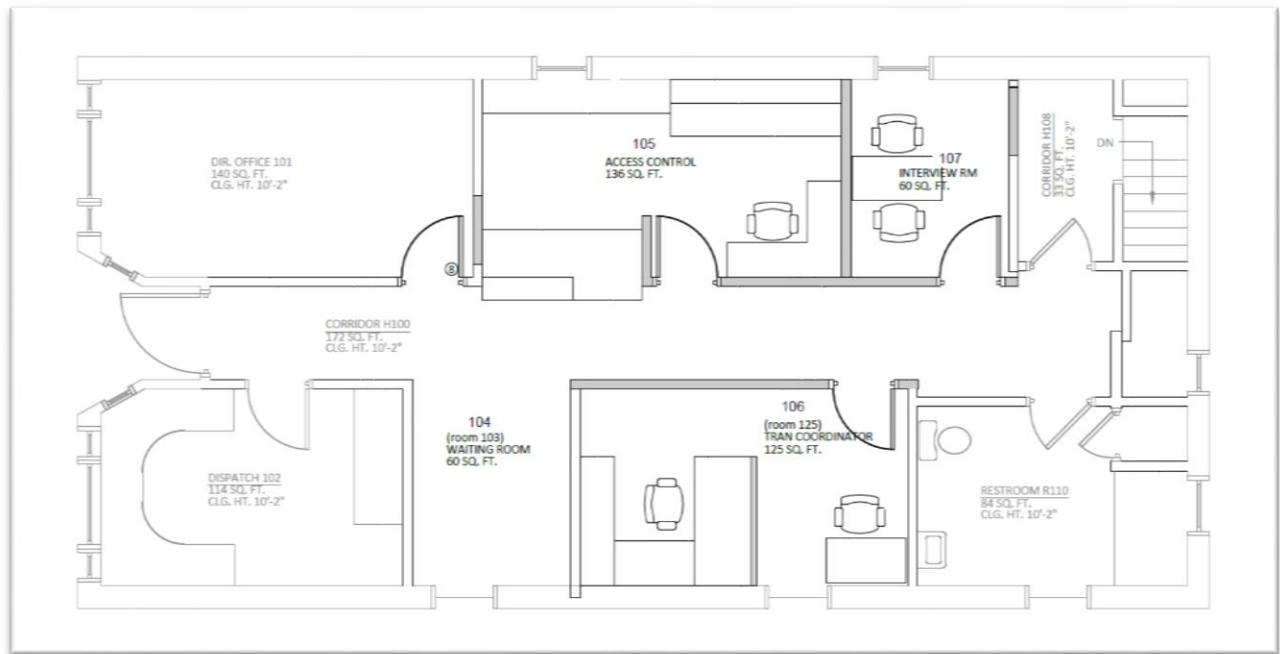


CAMPUS SAFETY & SECURITY – ACCESS CONTROL & TRANSPORTATION COORDINATOR RELOCATION
(Renovation)



ARCHITECT: Bates

CONTRACTOR: Weatherize Northeast

COMPETITION DATE: August, 2018

TOTAL SQUARE FOOTAGE: 553 Sq. Ft.

PROGRAMMATIC DRIVER: The Access Control and Transportation Coordinator functions are currently located in Chase Hall. In preparation for the future work slated in Chase, these two offices are being relocated to the Campus Safety and Security building. Moving Access Control and the Transportation Coordinator under Security's roof is beneficial to office adjacencies and the interior layout.

PROJECT DESCRIPTION: The floor plan will be improved by featuring a central corridor with an open waiting area, two private offices, and a small interview room, per the plan above.