



Adobe Photoshop

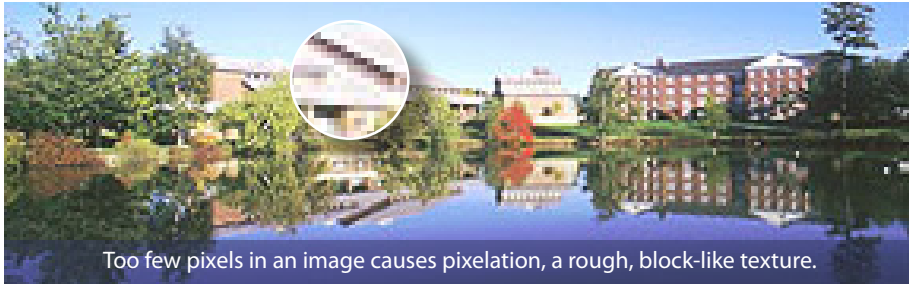
Transforming Low-Resolution Images



Watercolor Filter

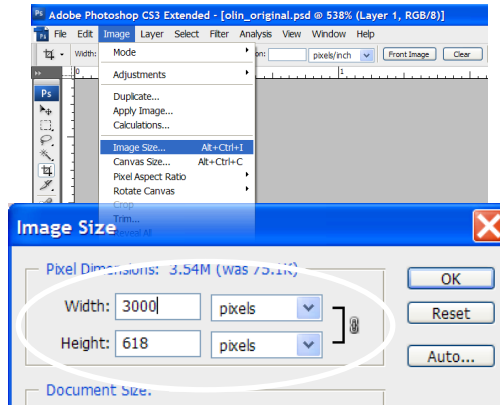
Bates College
Imaging and
Computing Center

1. Resize Image

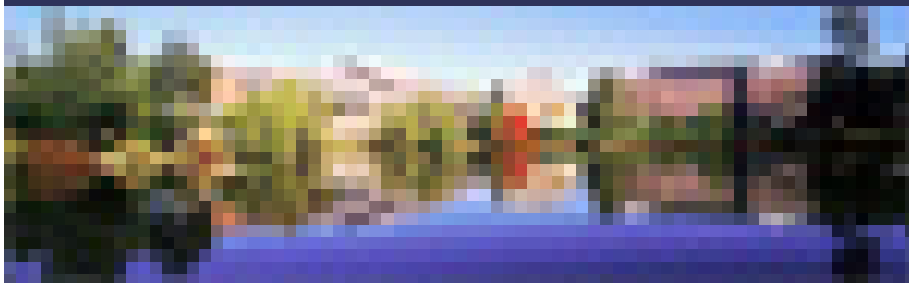


First pixels need to be added to the image so that it is possible to hide the pixelation.

1. Select the Image Size option from the Image menu.
2. Enter 3000 pixels for the width or height, whichever is longest, in the Pixel Dimension text boxes in the dialog box.
3. Click OK to complete the operation.

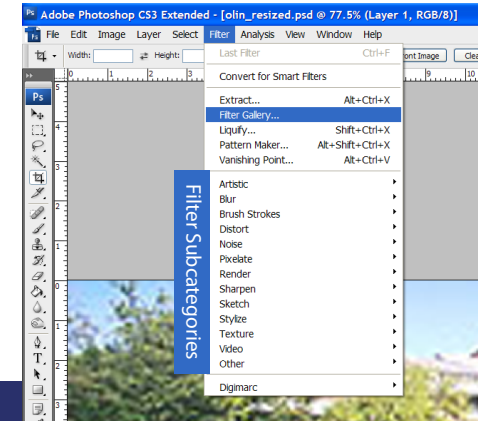


NOTE: Pixelation can be used creatively to reduce an image to abstract blocks of color. Simply resize the image by reducing the number of pixels. The example photograph is only 23 pixels in height.



2. Apply Filter

1. Select the Filter Gallery option from the Filter menu. The Filter Gallery contains most of the Photoshop filters. These filters, as well as others, can be found in the subcategories on the menu.
2. Apply a filter to the image. Adjust the attributes of the filter. Click OK to complete the operation. A combination of filters can be applied to an image.



Filter Gallery dialog box

