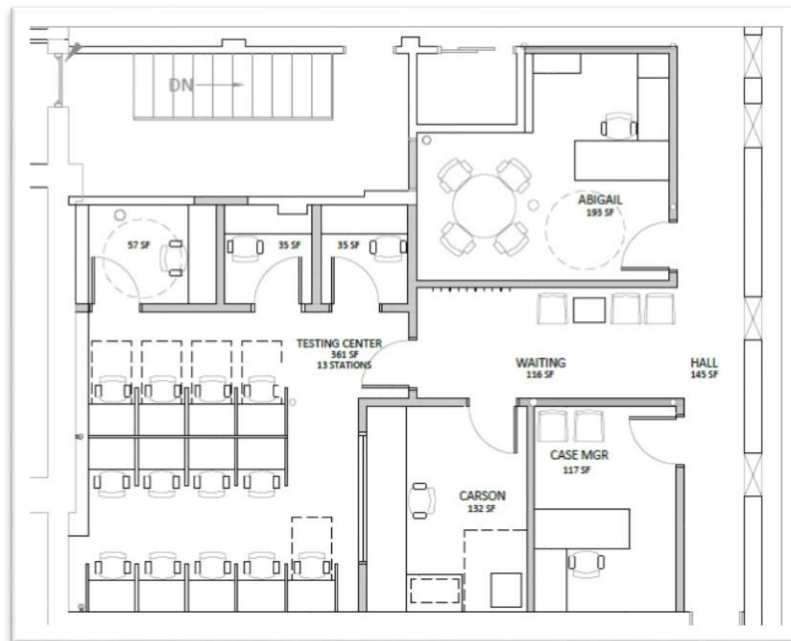


LADD LIBRARY – ACCESSIBLE EDUCATION AND STUDENT SUPPORT

(Renovation)



ARCHITECT: Bates

CONTRACTOR: Weatherize Northeast

COMPETITION DATE: June, 2018

TOTAL SQUARE FOOTAGE: 1,638 Sq. Ft.

PROGRAMMATIC DRIVER: The office of Accessible Education and Student Support (AESS) collaborates with students, faculty and staff to facilities equal access for students with disabilities. Since the program was established in 2015, they have operated out of Lane Hall where they have used conference rooms and other areas within the building to house the students they support. AESS see about 12% of the student body, so having a place to call their own that appropriately meet the needs of the students the serve was the driver behind the renovation at Ladd Library.

PROJECT DESCRIPTION: The new AESS suite will house three offices, a large open testing suite that seats 13, and three private testing cubbies, per the plan above.