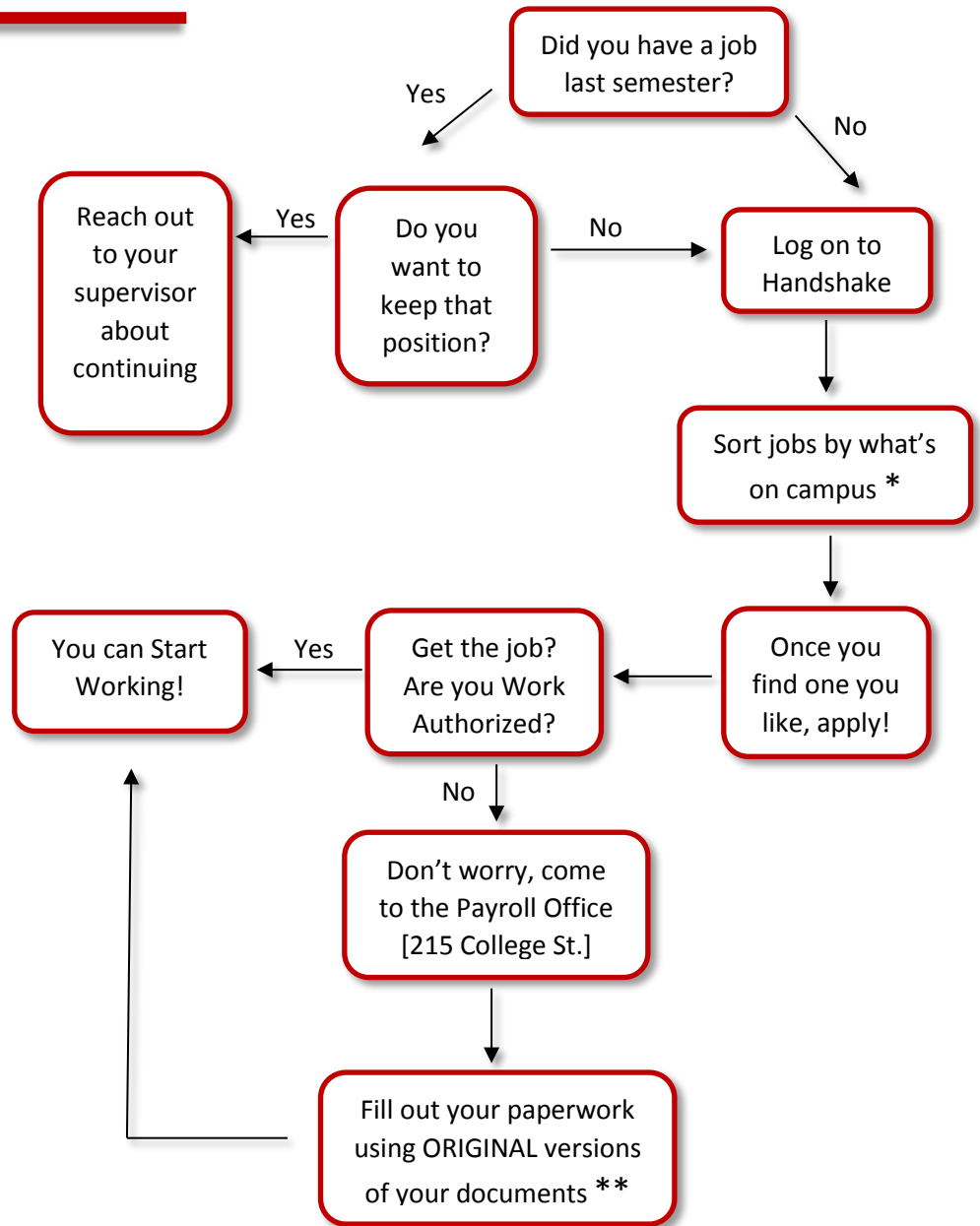


# Student Employment Flow Chart

Use this flowchart to navigate the student employment process. If you have any questions, please contact the Student Employment Coordinator [seo@bates.edu](mailto:seo@bates.edu)



## Helpful Links

[FAQ for Students](#)

[Handshake](#)

[Getting a Job On-Campus](#)

[Documentation for Working](#)

[Federal Work Study Information](#)

[International Students](#)

[Contact Information](#)

\*Click on the "Jobs" tab on the top of the Handshake home page, then click "On Campus" below the search bar to filter through the jobs

\*\*Please use the "Once You're Hired" section on the Student Employment Office website to make sure you have the right documentation BEFORE you stop by the office